

Bourne Quilters Newsletter



June 2026

Greetings from the Chair

It was great to hear from members how good the Shirley Stitchers Show and Tell was, and what a large variety of items they had to show from what is a small group of stitchers who regularly meet and sew together. I know they are really friendly as I met them when I joined them for a workshop. I'm sorry I missed it.

Things are hotting up for the show now and it will very much be the focus of Bourne Quilters for the next few months. We will be asking for volunteers, registering items for display; collecting makes for the sales table and asking for donations of destash to name a few of the activities. Everyone's contribution make it a great show that people love coming to so thank you all for your anticipated support.

Coming Up

Monday 1st and Tuesday 2nd June Kate Findlay - Nature in Textiles

Kate will talk about her animal, bird, landscape and garden based work. Creating fabric paintings since 2014 she uses appliqué methods and also mixes in many print and paint techniques.



On **Tuesday** Kate will lead a full day workshop making a fabric landscape inspired by bluebell woods. This workshop promises to be very popular so be sure to book your place at this month's meeting. This workshop is full!



Monday 6th July - preparation for the show!

WE NEED YOUR QUILTS; BAGS; PICTURES; FABRIC CREATIONS



Since the last show we have had 22 meetings and estimate that in excess of 300 items have been shown at our Show and Tells – you are prolific bunch of talented quilters. You can register your items at a meeting or by emailing Gill.Adams56@outlook.com and she will send you your number and further information that you need. Information can also be found on the website <https://bournequilters.com/quilt-show-2026/>

Over the past years several of us have been part of the organising committee for the show. So we don't panic about whether or not we will have enough to display but would rather have the items registered earlier than later. It means we can plan: get the labels sorted; and generally not leave things to the last minute. As a last minute dot.com person this is a bit alien to me (I always left my homework til 9pm on a Sunday!!) but I have learnt a little and writing this has led me to act and register my items!!

CHAIR'S CHALLENGE

If you need some black material for making your LP or 45 we will have some available at the June meeting.



As a reminder the instructions can be found here <https://bournequilters.com/quilt-show-2026/> scroll down and you will find them

Coach Trip to Alexandra Palace 10th October 2026

Bourne Quilters is organising a coach trip to the Knit and Stitch show at Alexandra Palace. See the link for more information about this show <https://www.knitandstitchshow.co.uk/london/> To make sure we can fill the coach and the trip goes ahead we are opening this to members and non-members at the same price and the same time. The cost of the trips is £46 including entrance ticket. We are arranging booking for this in good time so that if you wish you can book yourself onto a workshop. The workshop dates are likely to be out mid-June and if you register on their website you will get notification. <https://www.knitandstitchshow.co.uk/london/early-access/>

OUTWARD: Depart: Emsworth Square 8am Arrive: Alexandra Palace 11am

Additional pick up point in Petersfield Festival Car Park @ 8.30

RETURN: Depart Alexandra Palace 4pm Arrive Emsworth Square 7pm

Anticipated journey time best estimate is 3 hours but this does of course depend on traffic. The timing should allow 5 hours at the show.

COST: £46 including entrance ticket - same price for members and non-members so feel free to bring a friend

TO RESERVE YOUR PLACE: email: events@bournequilters.com or book at the monthly meeting. Deposit required of £25 with balance due 3rd August 2026. If you feel able to pay in full

£46 when booking it will be a huge help to the organisers. ****IMPORTANT** Put 'Knit and Stitch' in the subject line of the email

HOW TO PAY:

Preferably by BACS to: Bourne Quilters Sort code 20-69-34 Account 40594628

IMPORTANT please put payment reference 'Knit and Stitch'

TERMS OF BOOKING AND CONFIRMATION OF PLACE:

1. Your coach place and entry ticket is reserved by sending an email and making a deposit payment.
2. If a deposit of £20 is paid the balance is due by the 3rd August. Please note our entry tickets are being held on a rolling basis that we renew every month. If for any reason it becomes impossible to renew this (if they are selling out) we reserve the right to ask for full payment earlier.
3. You will receive confirmation of your place once your email and your payment are received. 'Events' check the account at the end of each month so please allow time for this to be sent out.
4. Refunds are not given once a deposit is paid, however you may 'sell' your place to someone else.
5. If you can't pass on your place to someone else if we have waiting list we will use your place for that person, in which case a refund will be given.
6. Further information regarding pick-up location will be shared nearer the time
7. If for any reason the trip cannot go ahead i.e. insufficient numbers to fill coach; you will receive a full refund. This decision will be made on or before 3rd August.

Sarah Sullivan

We're very pleased to let you know that Sarah Sullivan, who had to miss her scheduled meeting because she was unwell, has agreed to give her talk about Sylko in November.

Last Month's Activities May Meeting

In May we were lucky enough to have some lovely people from Shirley Quilters and Stitchers come and show us some of their work and what a treat it was! They are a small bunch of sewers who meet every week to sew, but are not keen on knitters! Their members have a wide range of interest from full sized quilts, through wall hangings, embellished pictures and textured pieces using upholstery fabric to small mats and we were shown examples of them all. As a group they have sewn a

lovely challenge quilt with blocks sewn by their members. One of the presenters (the French one, for those at the meeting) said that she wouldn't describe herself as a quilter in the traditional sense but produced an amazing range of textured wallhangings inspired by dry river beds or even a crumpled piece of paper. Another member took part in quilt swaps with sewers from other countries which she found very rewarding. All in all, it was an inspiring evening and demonstrated that we should not restrict ourselves to the traditional ideas of quilting, but open our minds to thinking outside the box.

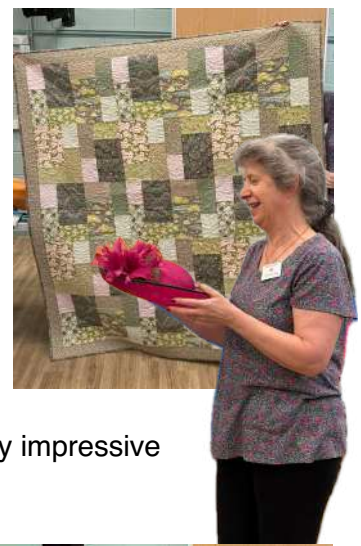




Show and Tell

More pictures on the website

As we get closer to the show BQ members are pulling out all the stops to get their items finished. We have seen a couple of finished BOM quilts, and how stunning but different they look. Alice might have got carried away with her tulips, but they make a very impressive bunch. There were a few full quilts that will look amazing when displayed on the quilt frames and the backs look almost as good as front. Catherine also showed us the hat and bag that she had made for her son's wedding - very impressive they were too.



Sarah Ashford Weekend

Learn to quilt with a walking foot, AKA get out of the ditch!!

At the end of April we held our first non-residential weekend. 20 of us went along with 12 prepared 12" 'sandwich blocks' and over the course of the weekend Sarah took us through the steps of how to mark up a quilt, the different tools we can use; threads to use; needles; and generally everything about using a walking foot. We went from basic to better and then, "Oh my goodness I never thought I could do that!" patterns in straight lines, curves and a combination of both to quilt our blocks. Sarah was teaching techniques in the Jacquie Gering books, Walk and Walk 2, and she gave us the confidence that we could do it. It was a lovely paced weekend and very social, starting the day with a get to know each other (say something about yourself that's not to do with quilting)! And time to chat over lunch. Some of us went out for a meal with /sarah on the Saturday evening to keep her company.



ITS SHOWTIME

Saturday 25th July & Sunday 26th July



Quilt Display – making backing for the displays

We are starting to work on the show plan and what we will display where. Our quilt stands have had a fantastic overhaul and are now much more stable and easier to use. If you've been to Festival of Quilts or other shows you will have seen that there is a plain background between quilts that are displayed back to back. We want to add this to our quilt displays so the quilts are shown off even better. It will also make less important the pairing of them which is a bit of a fiddle when setting up. We are going to use sheets and will need people to help make these by turning over a hem top and bottom and making a sleeve. It will be a simple job but we will have quite a few to do so if you think you could help please let us know.

Here's a checklist of things you can do to help there is info about it on the website or in this newsletter:

- *Sign up to volunteer
- *Register your items for display at the show
- *Bring in items for de-stash
- *Make your record for the chairs challenge
- *Make items for the sales table

Apologies that Raffle tickets were delayed last month, they WILL be available this month

As we announced last month we are raising money from the raffle for Rowans Hospice <https://www.rowanshospice.co.uk/and> Two Saints <https://twosaints.org.uk/>

Please take some raffle tickets and start selling for these great causes. The raffle is drawn at our AGM so selling over the next 6 months will really help raise money for these great causes

Destash – If you have anything for destash please bring it along to the next meetings leading up to the show. We can store and also start to sort. As stitchers we all love a rummage through partly half done, sewing notions and patterns and magazines. One sewist destash is another's treasure so please look out those things that you don't want anymore

Sales table – a great start has been made for our always popular sales table. Keep making things along the lines of things that you and your family would like to buy. If you like it others will want to buy it.

Lucky Dip – this is always popular; we find all sorts of things to put in it. Gifts from magazines that you won't use etc. Please start to sort them out and bring in June

Sun umbrella with base and Dress forms needed – we are still needing these

The committee have done some planning and there are some items that we think that would help us set up the show better. One of them is a sun umbrella and base. If it's a nice day it provides better space to have the entrance table outside, but we need a sun umbrella to keep people on the door comfortable

We have a feeling that there may be some items of clothing to display. Do you have a dress form we could use? Email members@bournequilters.com

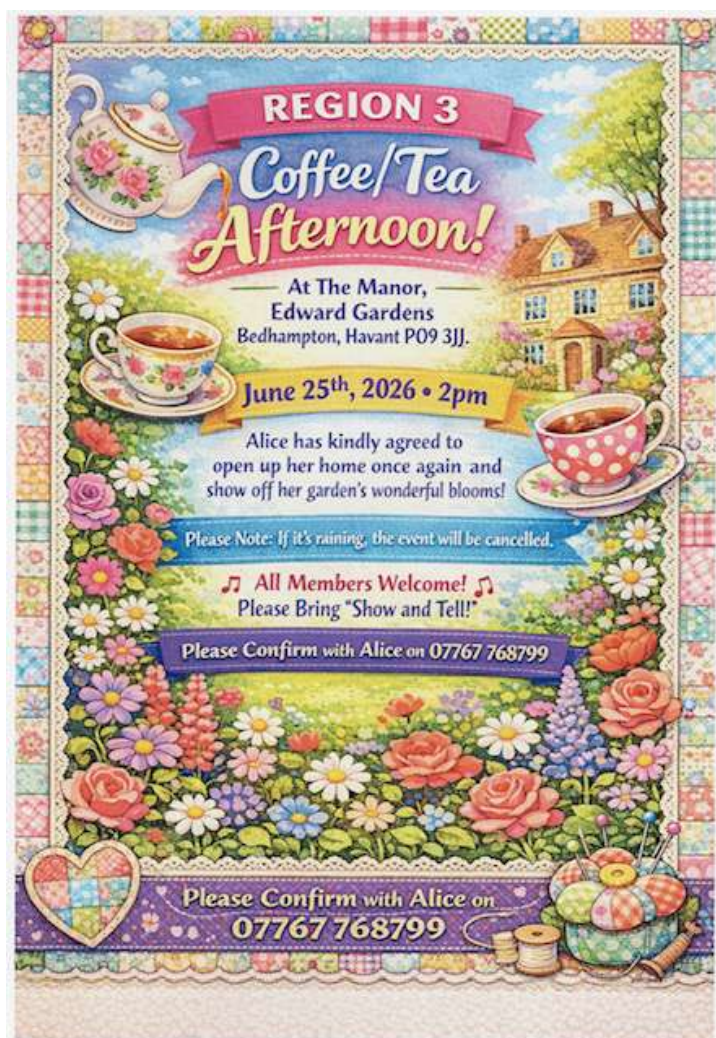
Volunteer sign up

We had a good response last month but help is still needed. Chris will be at the meeting with sign up sheets if you can let her know if you can help. She will then work on a rota, you don't need to be there all the time but we need help for set up; over the weekend and then take down.

New books for the library

Following on from Sarah's workshop, thanks to a couple of members, we have been able to put into the library the Walk and Walk 2 books by Jacque Gering.

Other news..... invitations



Fancy a trip with Aldwick Quilters to the Festival of Quilts 2026?

2 nights staying at The Birmingham Metropole Hotel right next to the NEC. Shuttle bus transport between the hotel and the exhibition running every 15 minutes.

Dates : July 30th to 1st August

Included in the cost : - Coach travel to and from Birmingham. 2 night's stay in the hotel. Breakfast and evening meal, (usually a buffet with 2 or 3 hot and cold choices.) Tickets for all 3 days into the show.

We get there about 12.30, after a comfort break halfway, in time to have a look around and plan for the next two day's shopping, talks and workshops. The return journey leaves from outside the NEC around 3.30.

Total cost: £445 for a twin room. £80 single supplement.

Pick up points: Worthing Dome, Littlehampton Anchor Springs, Bognor Regis Coach Park and Chichester Bus Station.

If you are interested in joining us please ring Jo Jennings on 01243 868080 and she will answer any questions you may have or ring me, Jane Smart, on 0783720005

The Last Page....

If you would like to come to our Monday meetings but find it hard to get there, please let a member of the committee know, it's not a promise as it would depend on where you live and who is passing but several members who come along have said they would be prepared to pick up and drop off if needed. Let Karen know through members@bournequilters.com or 07886796857

If at any time you are aware of another member who has been bereaved, is ill, in hospital, or just needs cheering up then please contact Sandie know through members@bournequilters.com so that Bourne Quilters can send a card. We would rather be told twice than not at all.

BQ has wadding for sale at the Monday meetings at a very reasonable price, it is available in multiples of half a metre.

These are available at the bargain prices of:

80/20 - £12/metre: Bamboo - £14/metre: Thermal - £9/metre

Contacts

The committee can now be contacted through the Bourne Quilters email addresses which are now fully operational.

For anything related to workshops or events please use: events@bournequilters.com

and for any other communication please use members@bournequilters.com

We can still be reached by phone:

Karen (Chair) 07886 796857

Gill (Membership queries) 07940892916

Chris (Newsletter) 07585 558916

Bourne Quilters Programme 2026

1st June	Kate Findlay	Nature in Textiles
2nd June	Kate Findlay workshop	Bluebell Woods
28th June	Young Quilters	
6th July	Show preparation	In house
25th July 26th July	Quilt Show	
3rd August	Helen Sill	Threads of Tradition
7th September	Pimm's and Strawberries	In house
5th October	Hannah's Room	Batiks
6th October	Hannah's room workshop	Confetti
10th October	Coach trip - Knit and Stitch	Alexandra Palace
24th October	Doughty's	
1st November	Young Quilters	
2nd November	Christmas Sewing	In house
7th November	Christmas Funday	In house
6th December	Young Quilters	
7th December	AGM	Christmas Party

Bourne Stitches Dates 2026

		June 2nd, 16th, 30th
July 14th, 28th	August 11th, 25th	September 8th, 22nd
October 6th 20th	November 3rd 17th	December 1st, 15th, 29th tbc